

Been Nov 13 :
 NOTES
 p1256

S/F
 Respiratory System

Function = gas exchange
 $[O_2, CO_2]$
 Lung

chest cavity

nose [hair + mucus]

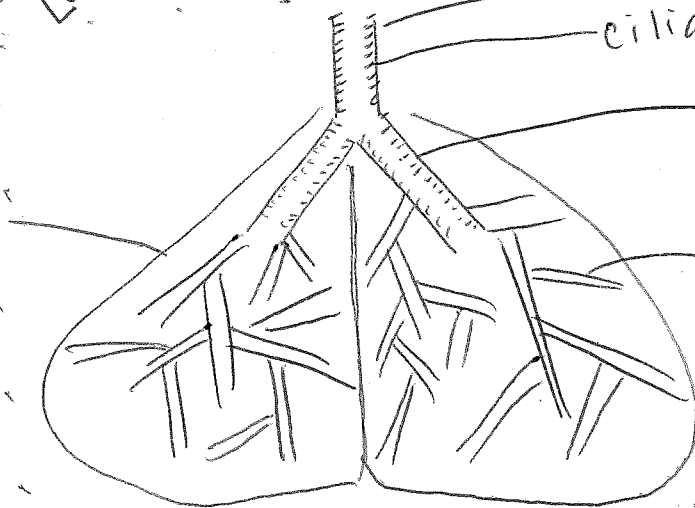
mouth

trachea

ciliated epithelium

BRONCHUS (pl. bronchii)

bronchiole



diaphragm
 Function:
 Breathing
 [inhale + exhale]

6Q: How does your body Δ pressure to get air in / out?

Inhale
 head up
 shoulders lift
 chest open
 diaphragm contract

CHEST CAVITY =

Big

pressure =

Low

AIR FLOWS IN

Exhale
 head up
 shoulders Relax
 chest Relax
 diaphragm Relax

CHEST CAVITY =

Small

pressure =

High

AIR FLOWS OUT

